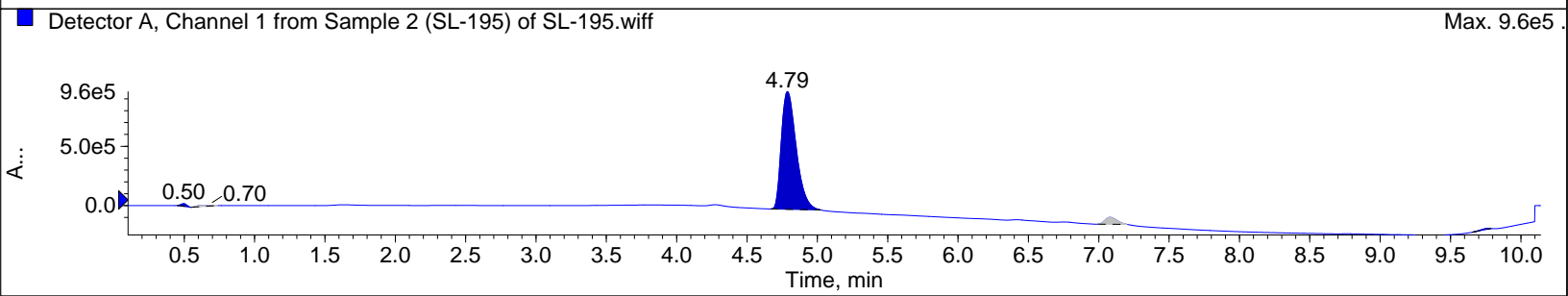


Peak List for "Detector A, Channel 2 from Sample 2 (SL-195) of SL-195.wiff"

	Time (min)	Area (counts)	% Area	Height	% Height	Width (min)	Baseline Type
1	0.5673	1193.5722	0.0174	539.0945	0.0569	0.0517	Base to Base
2	1.6315	5211.6618	0.0759	800.7709	0.0845	0.1167	Base to Base
3	4.2797	7.4152e4	1.0796	1.2207e4	1.2876	0.2133	Base to Base
4	4.7878	6.7740e6	98.6227	9.3127e5	98.2328	0.4283	Base to Base
5	6.2058	4464.1256	0.0650	818.2220	0.0863	0.0967	Base to Base
6	6.9583	2319.4904	0.0338	663.2003	0.0700	0.0750	Base to Base
7	7.0754	2170.5763	0.0316	724.7306	0.0764	0.0683	Base to Base
8	9.7554	5091.7962	0.0741	1000.2661	0.1055	0.1067	Base to Base



Peak List for "Detector A, Channel 1 from Sample 2 (SL-195) of SL-195.wiff"

	Time (min)	Area (counts)	% Area	Height	% Height	Width (min)	Baseline Type
1	0.4963	6.2551e4	0.8105	2.2293e4	2.0651	0.0933	Base to Base
2	0.6992	5.1997e4	0.6738	3031.2319	0.2808	0.1850	Base to Base
3	4.7865	7.2289e6	93.6687	9.9088e5	91.7918	0.3533	Base to Base
4	7.0805	3.4235e5	4.4359	5.8608e4	5.4293	0.2050	Base to Base
5	9.7700	3.1729e4	0.4111	4673.7913	0.4330	0.1300	Base to Base